



Bugge



Bugge

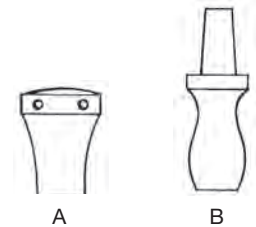
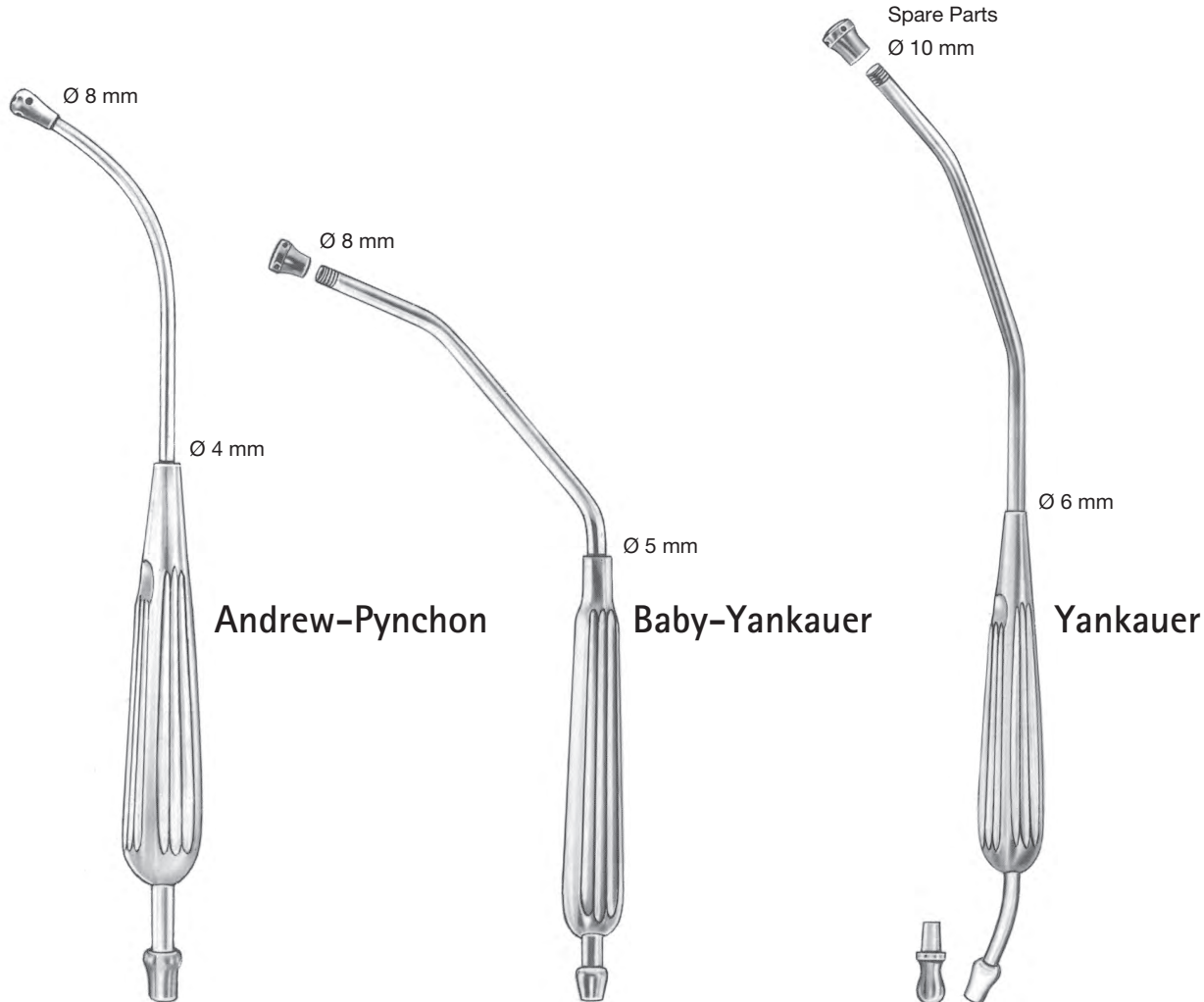
Art.-No.	Ø	Length	Size
18-0400	12 mm	29 cm/11 1/2"	Large
18-0402	10 mm	29 cm/11 1/2"	Medium
18-0404	8 mm	20 cm/8"	Small
18-0406	6 mm	20 cm/8"	Mini
18-0408	4.5 mm	20 cm/8"	Micro (Pediatric)

Poole

Art.-No.	Ø	Length	Charr.	
18-0240	10 mm	23.5 cm/9"	30	straight
18-0242	8 mm	25 cm/10"	30	curved

Poole





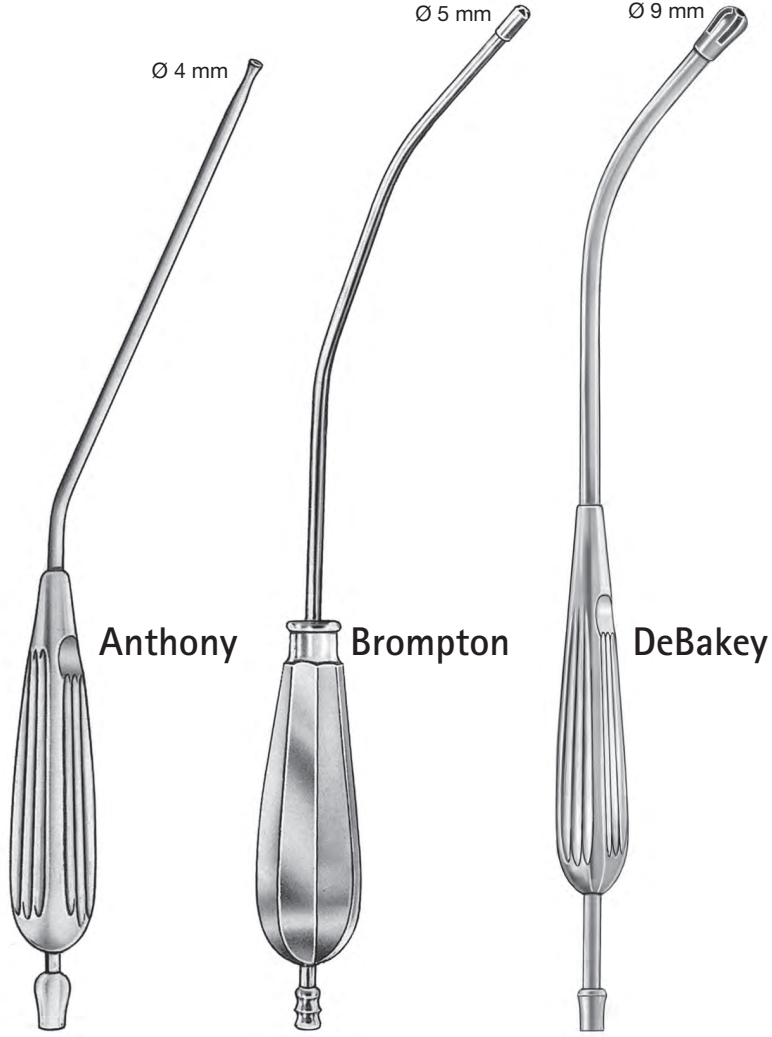
Andrew-Pynchon		
Art.-No.		Length
18-0228		24 cm/9½"
Baby-Yankauer		
Art.-No.		Length
18-0232		21 cm/8¼"
Yankauer		
Art.-No.	Fig.	Length
18-0230		29.5 cm/11½"
18-0230.SP	A	
18-0230.KO	B	



Ø 4 mm

Ø 5 mm

Ø 9 mm



Anthony

Brompton

DeBakey

Heparin



Tibbs



A

B

C

D

Anthony		
Art.-No.	Ø	Length
18-0229	4 mm	27 cm/10½"

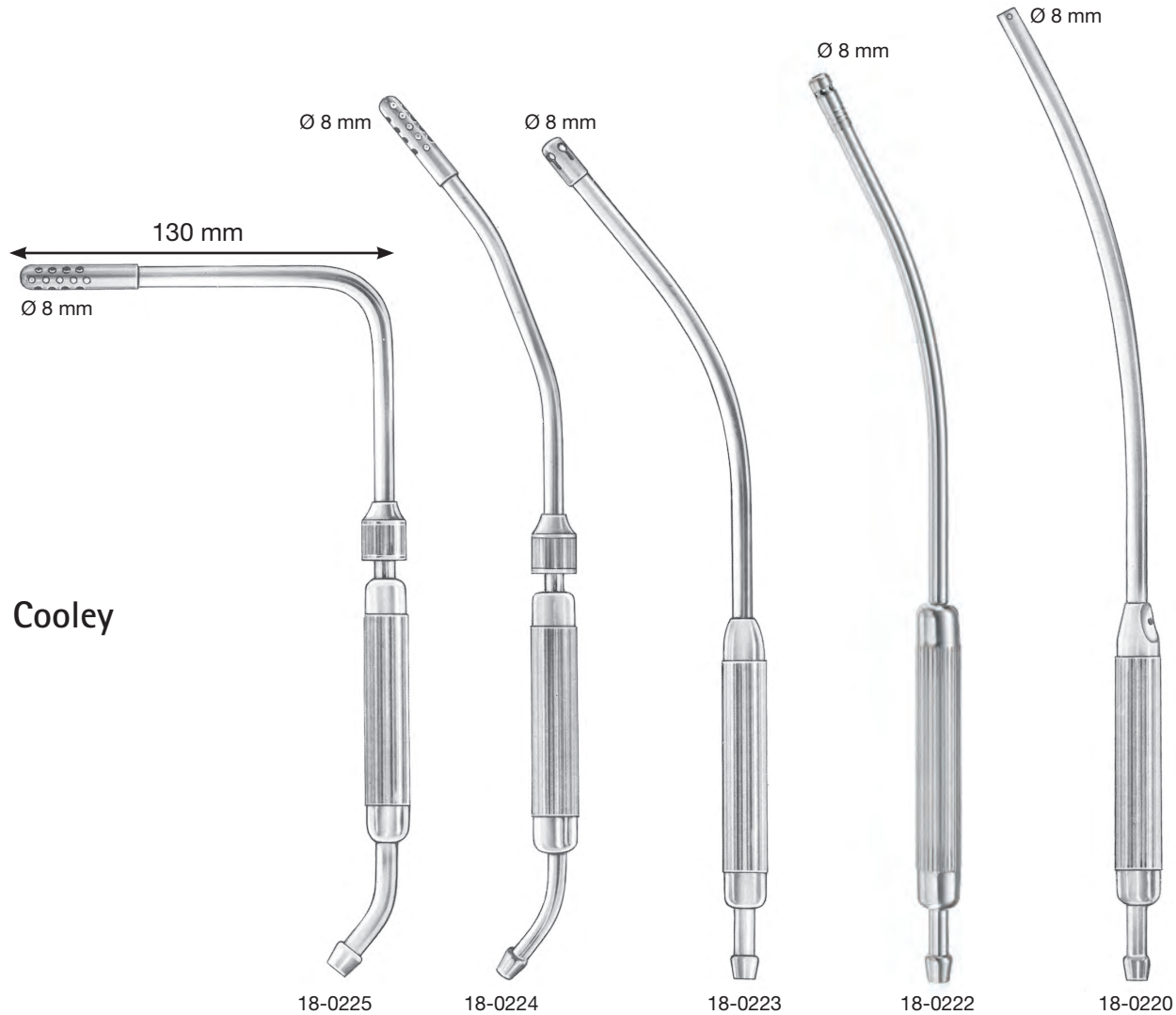
Brompton		
Art.-No.	Ø	Length
18-0190	5 mm	29 cm/11½"

DeBakey		
Art.-No.	Ø	Length
18-0200	9 mm	28 cm/11"

Heparin		
Art.-No.	Ø	Length
18-0099	2 mm	45 mm
18-0100	3 mm	45 mm
18-0102	3.7 mm	55 mm
18-0104	5 mm	160 mm

Tibbs			
Art.-No.	size	Fig.	Length
18-0280	small	A	58 mm
18-0281	small	B	58 mm
18-0282	large	C	58 mm
18-0283	large	D	58 mm
18-0284	Set of 4		

Suction Tubes



Cooley

Cooley Art.-No.	Ø	Length
18-0225	8 mm	25 cm/10"
18-0224	8 mm	33 cm/13"
18-0223	8 mm	30 cm/12"
18-0222	8 mm	31 cm/12¼"
18-0220	8 mm	36 cm/14¼"



Suction Tubes

**DeBakey-Adson
Suction Tube**

Art.-No.	Length
18-4070	20 cm/8"
18-4072	16 cm/6¼"

**Southampton
Pediatric Suction Tube**

Art.-No.	Length
18-0189	19.5 cm/7½"
18-0188	19.5 cm/7½" (fluted)

**Braun-Ralph
Suction Tube**

Art.-No.	Length	Ø
18-0233	31 cm/12¼"	7 mm
18-0233.05	31 cm/12¼"	5 mm
18-0233.03	31 cm/12¼"	3 mm


**DeBakey-Adson
Suction Tube**

Delicate 4 mm suction tube for coronary surgery with a 5 mm basket with 4 side openings at the distal tip. Tip permanently attached.


**Southampton
Pediatric Suction Tube**

Extra delicate 3 mm suction tube for pediatric surgery with a 3 mm tip with 4 side openings or a fluted tip.

fluted


**Braun-Ralph
Suction Tube**

5 mm suction tube for surgery with long fluted tip.



Pediatric Suction Tubes



Morse-Andrews
Suction Tube

6 mm diameter tip with one distal opening and 4 side openings mounted on a short 3 mm outside diameter tube.



Morse-Andrews
Suction Tube

Art.-No.	Length
18-0205	26 cm/10¼"

Pediatric Suction Tubes

18-0425	3.0mm 21cm
18-0426	4.0mm 22.5cm
18-0427	4.0mm 24.5cm

**HLM****Art.-No.**

18-0430 Suction with long
basket 28cm 6.9mm

Senning**Art.-No.**

18-0212 Suction Tube
8mm basket tip 31cm

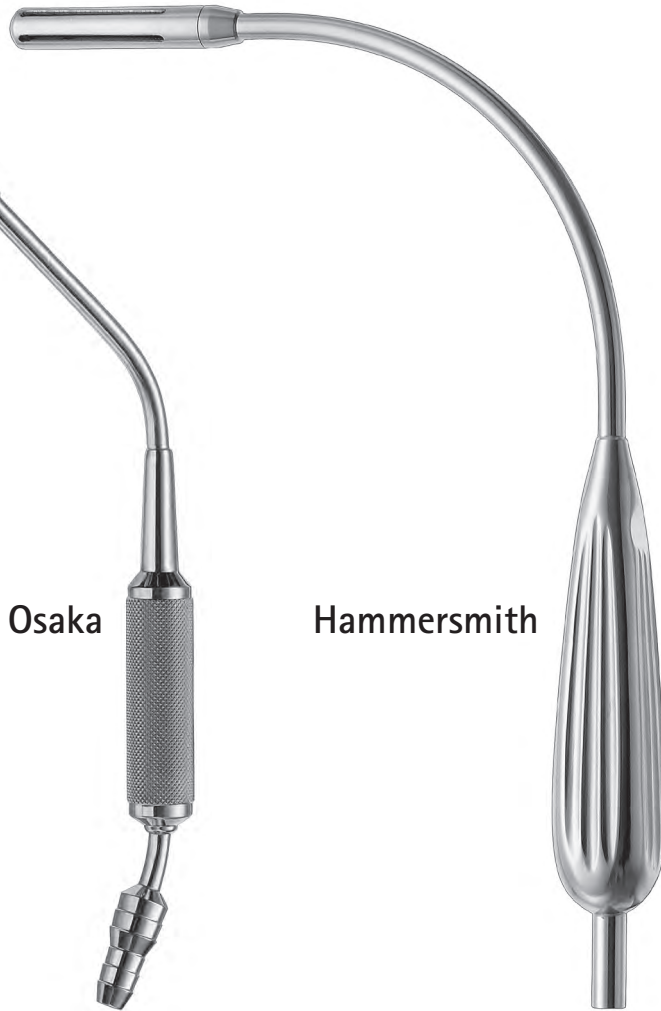
Jamieson**Art.-No.**

18-0420 Dissection Sucker and
Plaque Remover
27cm x 1.0mm





Osaka



Hammersmith



Harley-Street

Osaka		
Art.-No.	Ø	Length
18-0234	7 mm	27 cm/10½''
Hammersmith		
Art.-No.		Length
18-0237		26.5 cm/10¼''
Harley-Street		
Art.-No.		Length
18-0235		32 cm/12½''

Frazier

Suction Tube

Frazier Suction Tube

Art.-No.	Fig.	Ø	Length																																														
18-4020	A	2.0 mm	17 cm/6 1/2"																																														
18-4021	A	2.7 mm	17 cm/6 1/2"																																														
18-4022	A	3.3 mm	17 cm/6 1/2"																																														
18-4023	A </tr <tr> <td>18-4030</td> <td>B</td> <td>2.0 mm</td> <td>13 cm/5"</td> </tr> <tr> <td>18-4031</td> <td>B</td> <td>2.7 mm</td> <td>13 cm/5"</td> </tr> <tr> <td>18-4032</td> <td>B</td> <td>3.3 mm</td> <td>13 cm/5"</td> </tr> <tr> <td>18-4033</td> <td>B</td> <td>4.0 mm</td> <td>13 cm/5"</td> </tr> <tr> <td>18-4040</td> <td>B</td> <td>2.0 mm</td> <td>17 cm/6 1/2"</td> </tr> <tr> <td>18-4041</td> <td>B</td> <td>2.7 mm</td> <td>17 cm/6 1/2"</td> </tr> <tr> <td>18-4042</td> <td>B</td> <td>3.3 mm</td> <td>17 cm/6 1/2"</td> </tr> <tr> <td>18-4043</td> <td>B</td> <td>4.0 mm</td> <td>17 cm/6 1/2"</td> </tr> <tr> <td>18-4060</td> <td>C</td> <td>2.0 mm</td> <td>17 cm/6 1/2"</td> </tr> <tr> <td>18-4061</td> <td>C</td> <td>2.7 mm</td> <td>17 cm/6 1/2"</td> </tr> <tr> <td>18-4062</td> <td>C</td> <td>3.3 mm</td> <td>17 cm/6 1/2"</td> </tr> <tr> <td>18-4063</td> <td>C</td> <td>4.0 mm</td> <td>17 cm/6 1/2"</td> </tr>	18-4030	B	2.0 mm	13 cm/5"	18-4031	B	2.7 mm	13 cm/5"	18-4032	B	3.3 mm	13 cm/5"	18-4033	B	4.0 mm	13 cm/5"	18-4040	B	2.0 mm	17 cm/6 1/2"	18-4041	B	2.7 mm	17 cm/6 1/2"	18-4042	B	3.3 mm	17 cm/6 1/2"	18-4043	B	4.0 mm	17 cm/6 1/2"	18-4060	C	2.0 mm	17 cm/6 1/2"	18-4061	C	2.7 mm	17 cm/6 1/2"	18-4062	C	3.3 mm	17 cm/6 1/2"	18-4063	C	4.0 mm	17 cm/6 1/2"
18-4030	B	2.0 mm	13 cm/5"																																														
18-4031	B	2.7 mm	13 cm/5"																																														
18-4032	B	3.3 mm	13 cm/5"																																														
18-4033	B	4.0 mm	13 cm/5"																																														
18-4040	B	2.0 mm	17 cm/6 1/2"																																														
18-4041	B	2.7 mm	17 cm/6 1/2"																																														
18-4042	B	3.3 mm	17 cm/6 1/2"																																														
18-4043	B	4.0 mm	17 cm/6 1/2"																																														
18-4060	C	2.0 mm	17 cm/6 1/2"																																														
18-4061	C	2.7 mm	17 cm/6 1/2"																																														
18-4062	C	3.3 mm	17 cm/6 1/2"																																														
18-4063	C	4.0 mm	17 cm/6 1/2"																																														



A



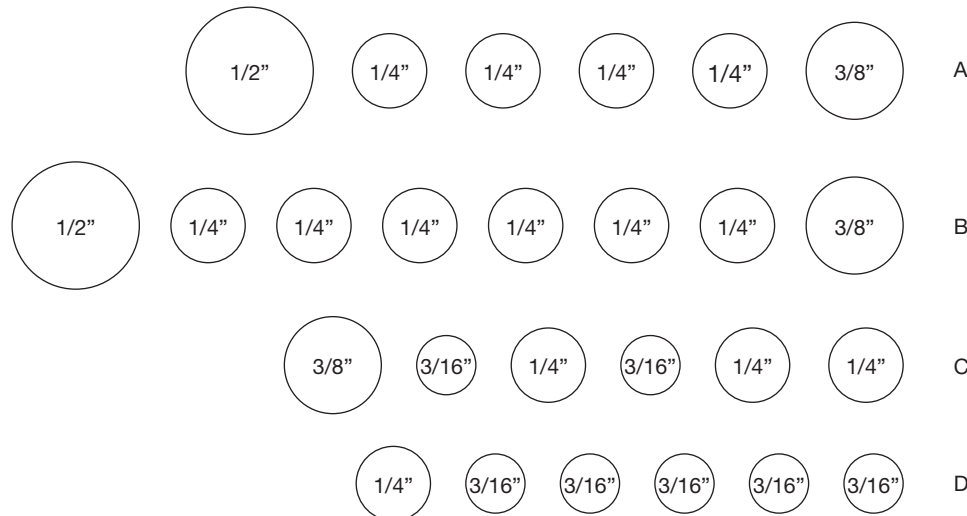
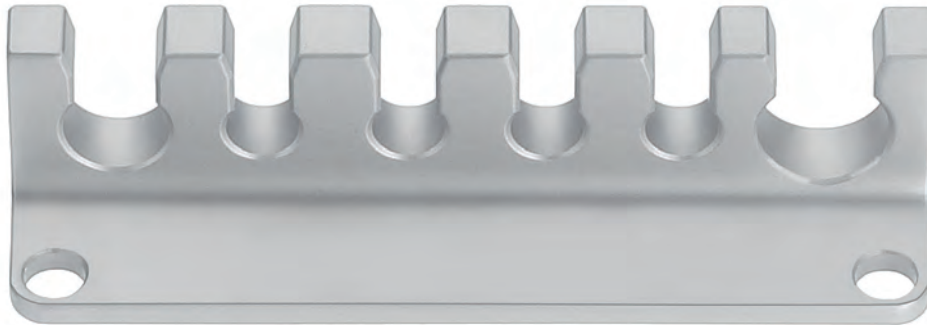
B



C



Tube Holders



Tube Holder

Art.-No.	Fig.	
77-8010	A	Adult
77-8011	B	Adult long
77-8015	C	Children
77-8020	D	Infants

**Ice Water Sucker**

18-0320

**Baylor
Sump Tubes****Art.-No.**

18-0300	90°	5 mm
18-0301	45°	5 mm
18-0305	90°	4 mm
18-0306	45°	4 mm

**Baylor
Vascular Cannula**

18-0310 90° 4 mm

**Ross
Basket**

Art.-No.	Tube I.D.	Length
18-4500	1/2"	29 mm
18-4501	3/8"	29 mm
18-4502	3/8"	19 mm
18-4503	1/4"	16 mm

**Ross
Sump Sucker**

Art.-No.	Tube I.D.	Size
18-4505	3/16"	Adult
18-4506	3/16"	Child
18-4507	1/8"	Infant

**Ross
Vent**

Art.-No.	Tube I.D.	Size
18-4520	3/16"	Adult
18-4521	3/16"	Child
18-4522	1/8"	Infant

Ice Water Sucker

Ice Water Sucker

**Ross**

Basket

**Baylor**

Sump Tubes

**Ross**

Sump Sucker

**Baylor**

Vascular Cannula

**Ross**

Vent





Ormond

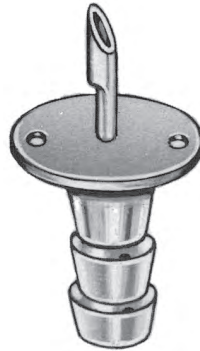
Drain Vent



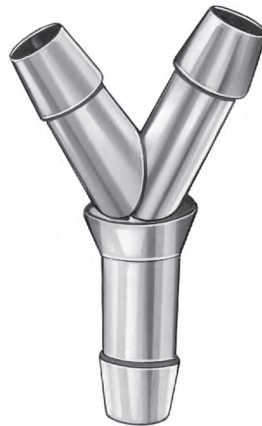
Straight connector +
Straight Reducer



Air Vent Needle



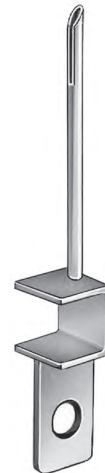
Y-connector



Air Vent Needle



Vent Needle



Ormond

Drain Vent

Art.-No.	Tube I.D.	Length
18-4511	1/4" (6 mm)	18 mm
18-4510	1/8" (3 mm)	10 mm

Air Vent Needle

Art.-No.	Tube I.D.	Size
18-4550	1/4" (6 mm)	18 ga.
18-4551	Luer-Lock	18 ga.

Straight connector

Art.-No.	Tube I.D.	
18-4562	1/2"	(12 mm)
18-4563	3/8"	(9 mm)
18-4564	1/4"	(6 mm)

Straight Reducer

18-4469	5/8" → 1/2"	(16 → 12 mm)
18-4470	5/8" → 3/8"	(16 → 9 mm)
18-4471	1/2" → 3/8"	(12 → 9 mm)
18-4472	1/2" → 1/4"	(12 → 6 mm)
18-4473	3/8" → 1/4"	(9 → 6 mm)
18-4474	1/4" → 3/16"	(6 → 4.7 mm)
18-4475	1/4" → 3/16"	(6 → 3 mm)
18-4476	5/16" → 1/4"	(8 → 6 mm)

Y-connector

Art.-No.	Size
18-4573	1/2" x 1/4" x 1/4"
18-4574	1/2" x 3/8" x 1/4"
18-4575	1/2" x 3/8" x 3/8"

Vent Needle

Art.-No.	Needle Size	Length
18-4555	3 x 55 mm	95 mm